



35 Rushfield Place

, Ballyclare, BT39 0FR

£1,275

- Semi Detached family home in highly sought after development in Ballyclare
- Modern fitted kitchen with integrated appliances
- Bright sunroom leading to large 25.0sqm rear garden with patio area
- Convenient downstairs WC
- 3 spacious bedrooms
- Master bedroom with ensuite
- Large family bathroom
- CCTV and alarm system to include smart front door locking system
- Off street parking with electric car charging point
- Convenient access to Ballyclare town centre

Viewing

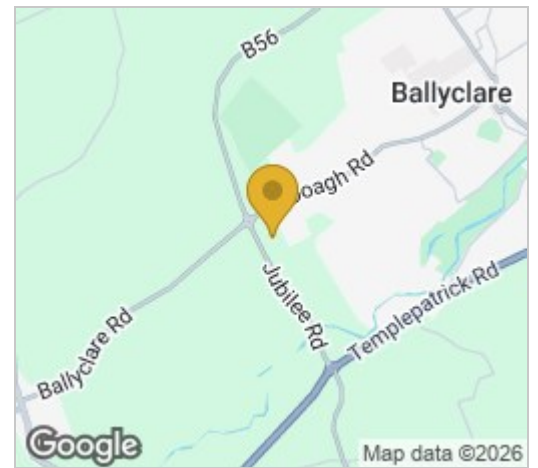
Please contact our Nest Estate Agents Office on 02893438090 if you wish to arrange a viewing appointment for this property or require further information.



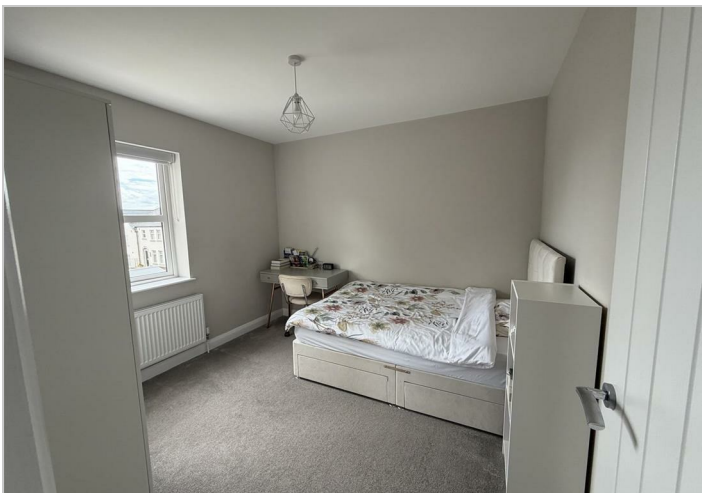
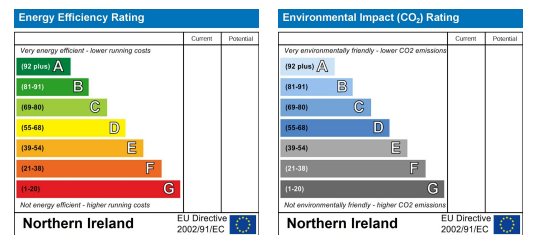
Floor Plan



Area Map



Energy Efficiency Graph



These particulars, whilst believed to be accurate are set out as a general outline only for guidance and do not constitute any part of an offer or contract. Intending purchasers should not rely on them as statements of representation of fact, but must satisfy themselves by inspection or otherwise as to their accuracy. No person in this firm's employment has the authority to make or give any representation or warranty in respect of the property.